

# PROGRAM OF EXCELLENCE IN NANOTECHNOLOGY (PEN)

## Integrated Nanosystems for Diagnosis and Therapy

Supported by the National Heart, Lung and Blood Institute (NHLBI)  
of the  
National Institutes of Health (NIH)

# SEMINAR

Principal Investigator  
Michael J. Welch, Ph.D.  
Washington University School of Medicine

Co-Principal Investigator  
Karen L. Wooley, Ph.D.  
Texas A&M University



## Niren Murthy, Ph.D.

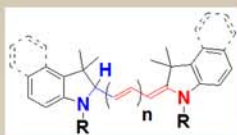
Associate Professor

Wallace H. Coulter Dept. of Biomedical Engineering  
Georgia Institute of Technology

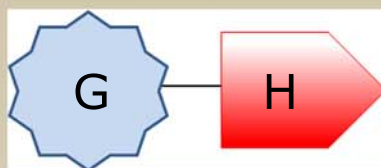
### “New materials for drug delivery and molecular imaging”



siRNA Delivery



Imaging ROS



Autocatalytic delivery

## Thursday, March 3, 2011



Washington University School of Medicine

Farrell Learning and Teaching Center

Holden Auditorium

2:00 - 3:00 p.m.

For more information, contact  
Eileen A. Cler at [clere@mir.wustl.edu](mailto:clere@mir.wustl.edu)

<http://www.bme.gatech.edu/groups/murthylab/murthylab/HOME.html>